

Time & location can be crucial **safety** factors

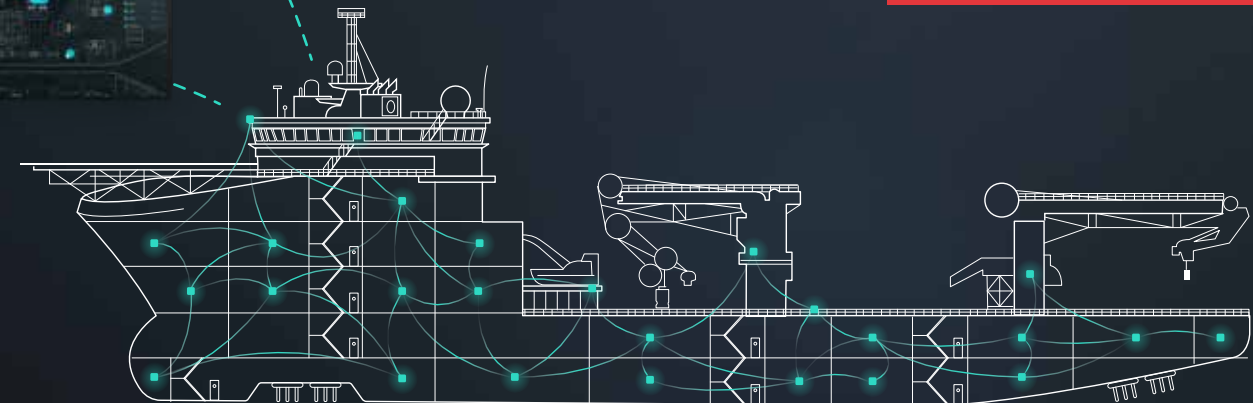
Realtime personnel on board overview during emergency situations, allowing immediate and high precision rescue team involvement.



Realtime overview

Personal distress alarm

Secured cloud-based services





A new era for maritime safety and security in high-risk areas. Realtime situation overview of Personnel On-Board.

The ScanReach Onboard Wireless Connectivity (OWC) is a mesh of nodes enabling harvesting and transmitting of data wirelessly in complex steel environments. This means a new world of digital innovation and problem solving onboard maritime vessels is possible.

This smart IoT platform powers the ScanReach ConnectPOB, providing on board emergency response teams with an realtime overview and position of all personnel in any situation.

Information can also be shared through secured cloud-based services with various locations, such as fleet management offices, shipowner offices, coastal services and rescue departments, and insurance companies. This enables enhanced decision support and assistant in emergency decisions.

Not being able to quickly identify and locate missing personnel lead to delays in mobilising assistance and providing potentially life-saving treatment. With the distress alarm button on the wearable the bridge can be alerted in case of emergency.

Explore the power of wireless connectivity to improve vessel performance and competitiveness.

ScanReach OWC solution is DNV type approved and can be installed to any vessel in a matter of hours by the crew, avoiding expensive installation cost and complex cabling.

It's critical to find better ways to compete in markets with low margins and high competition.